

Bloomington High School Baseball & Softball

Bloomington, CA

EXHIBIT 'C'

Lighting System

Pole / Fixture Summary						
Pole ID	Pole Height	Mtg Height	Fixture Qty	Luminaire Type	Load	Circuit
A1-A2	70'	70'	4	TLC-LED-1500	5.72 kW	A
		16'	1	TLC-BT-575	0.58 kW	A
A3-A4	60'	60'	2	TLC-LED-1200	2.34 kW	B
		60'	1	TLC-LED-900	0.89 kW	B
		16'	1	TLC-BT-575	0.58 kW	B
A5-A6	70'	70'	4	TLC-LED-1500	5.72 kW	C
		16'	1	TLC-BT-575	0.58 kW	C
A7-A8	70'	70'	1	TLC-LED-1200	1.17 kW	E
		70'	2	TLC-LED-900	1.78 kW	E
		16'	1	TLC-BT-575	0.58 kW	C
B1	80'	80'	7	TLC-LED-1500	10.01 kW	A
		16'	1	TLC-BT-575	0.58 kW	A
		60'	3	TLC-LED-400	1.20 kW	A
		80'	6	TLC-LED-1500	8.58 kW	D
		16'	2	TLC-BT-575	1.15 kW	D
B2	80'	80'	7	TLC-LED-1500	10.01 kW	A
		16'	1	TLC-BT-575	0.58 kW	A
		60'	1	TLC-LED-400	0.40 kW	A
B3	70'	70'	5	TLC-LED-1200	5.85 kW	B
		16'	2	TLC-BT-575	1.15 kW	B
B4	70'	70'	5	TLC-LED-1200	5.85 kW	B
		16'	2	TLC-BT-575	1.15 kW	B
		40'	1	TLC-LED-600	0.58 kW	B
B5-B6, B8	80'	80'	6	TLC-LED-1500	8.58 kW	D
		16'	2	TLC-BT-575	1.15 kW	D
C1-C2, D1-D2	70'	70'	4	TLC-LED-900	3.56 kW	A
		16'	1	TLC-BT-575	0.58 kW	A
19			123		132.65 kW	

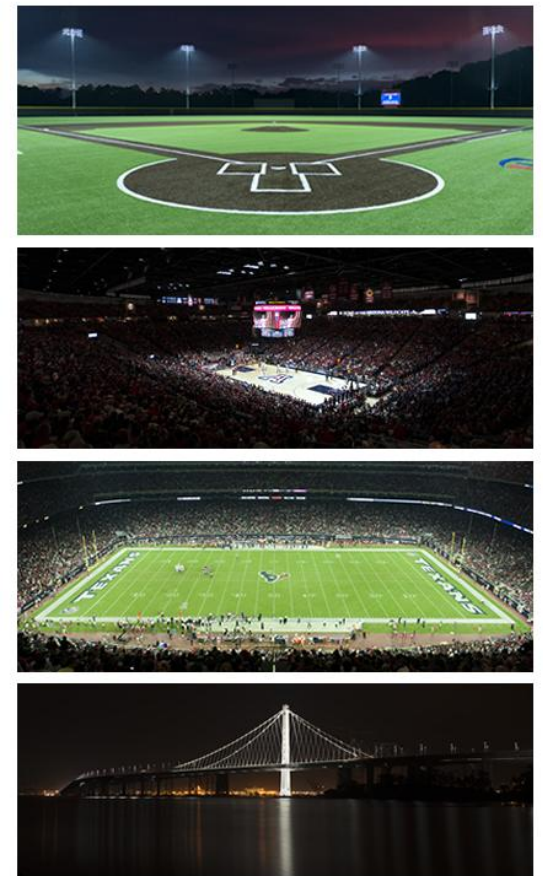
Circuit Summary			
Circuit	Description	Load	Fixture Qty
A	Varsity Baseball	51.9 kW	50
B	Varsity Softball	22.19 kW	23
C	JVBB Infield	13.74 kW	12
D	JV Outfield	38.92 kW	32
E	JVSB Infield	5.9 kW	6

Fixture Type Summary							
Type	Source	Wattage	Lumens	L90	L80	L70	Quantity
TLC-LED-400	LED 5700K - 75 CRI	400W	46,500	>120,000	>120,000	>120,000	4
TLC-LED-1500	LED 5700K - 75 CRI	1430W	160,000	>120,000	>120,000	>120,000	54
TLC-LED-1200	LED 5700K - 75 CRI	1170W	136,000	>120,000	>120,000	>120,000	16
TLC-LED-600	LED 5700K - 75 CRI	580W	65,600	>120,000	>120,000	>120,000	1
TLC-LED-900	LED 5700K - 75 CRI	890W	89,600	>120,000	>120,000	>120,000	22
TLC-BT-575	LED 5700K - 75 CRI	575W	52,000	>120,000	>120,000	>120,000	26

Light Level Summary

Calculation Grid Summary								
Grid Name	Calculation Metric	Illumination					Circuits	Fixture Qty
		Ave	Min	Max	Max/Min	Ave/Min		
Alder Ave Spill	Horizontal	0.06	0	0.35	0.00	0.00	A,B,C,D,E	123
Alder Ave Spill	Max Candela (by Fixture)	6255	30.8	41193	1339.58	203.41	A,B,C,D,E	123
Alder Ave Spill	Max Vertical Illuminance Metric	0.15	0	1.02	0.00	0.00	A,B,C,D,E	123
JV Baseball (Infield)	Horizontal Illuminance	51.9	42	58	1.38	1.24	C,D	44
JV Baseball (Outfield)	Horizontal Illuminance	34.7	26.4	53	2.01	1.31	C,D	44
JV Softball (Infield)	Horizontal Illuminance	54.7	44.6	65.4	1.47	1.23	D,E	38
JV Softball (Outfield)	Horizontal Illuminance	34.8	25.3	49.2	1.95	1.37	D,E	38
Santa Ana Ave Spill	Horizontal	0.10	0	0.27	0.00	0.00	A,B,C,D,E	123

From Hometown to Professional

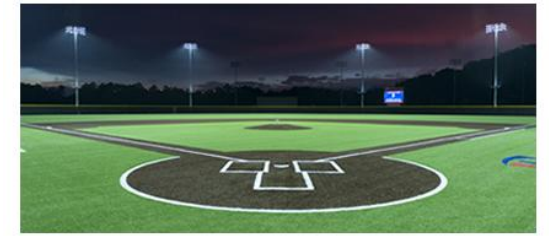


Bloomington High School Baseball & Softball

Bloomington, CA

Calculation Grid Summary								
Grid Name	Calculation Metric	Illumination					Circuits	Fixture Qty
		Ave	Min	Max	Max/Min	Ave/Min		
Santa Ana Ave Spill	Max Candela (by Fixture)	15491	74.5	44176	592.73	207.85	A,B,C,D,E	123
Santa Ana Ave Spill	Max Vertical Illuminance Metric	0.30	0	0.83	2908.35		A,B,C,D,E	123
VBB 1st Base Bullpen	Horizontal	32.4	20.9	41.8	2.00	1.55	A	50
VBB 3rd Base Bullpen	Horizontal	37.2	22.9	49.8	2.17	1.62	A	50
VBB Batting Cage	Horizontal	35	30.1	37.9	1.26	1.16	A	50
VSB Batting Cage	Horizontal	32.7	21.7	40.5	1.87	1.51	B	23
Varsity Baseball (Infield)	Horizontal Illuminance	50.3	39.2	61.1	1.56	1.28	A	50
Varsity Baseball (Outfield)	Horizontal Illuminance	32	21.8	46.2	2.12	1.47	A	50
Varsity Softball (Infield)	Horizontal Illuminance	50.5	39	63.2	1.62	1.29	B	23
Varsity Softball (Outfield)	Horizontal Illuminance	31.4	21.5	45.7	2.13	1.46	B	23

From Hometown to Professional

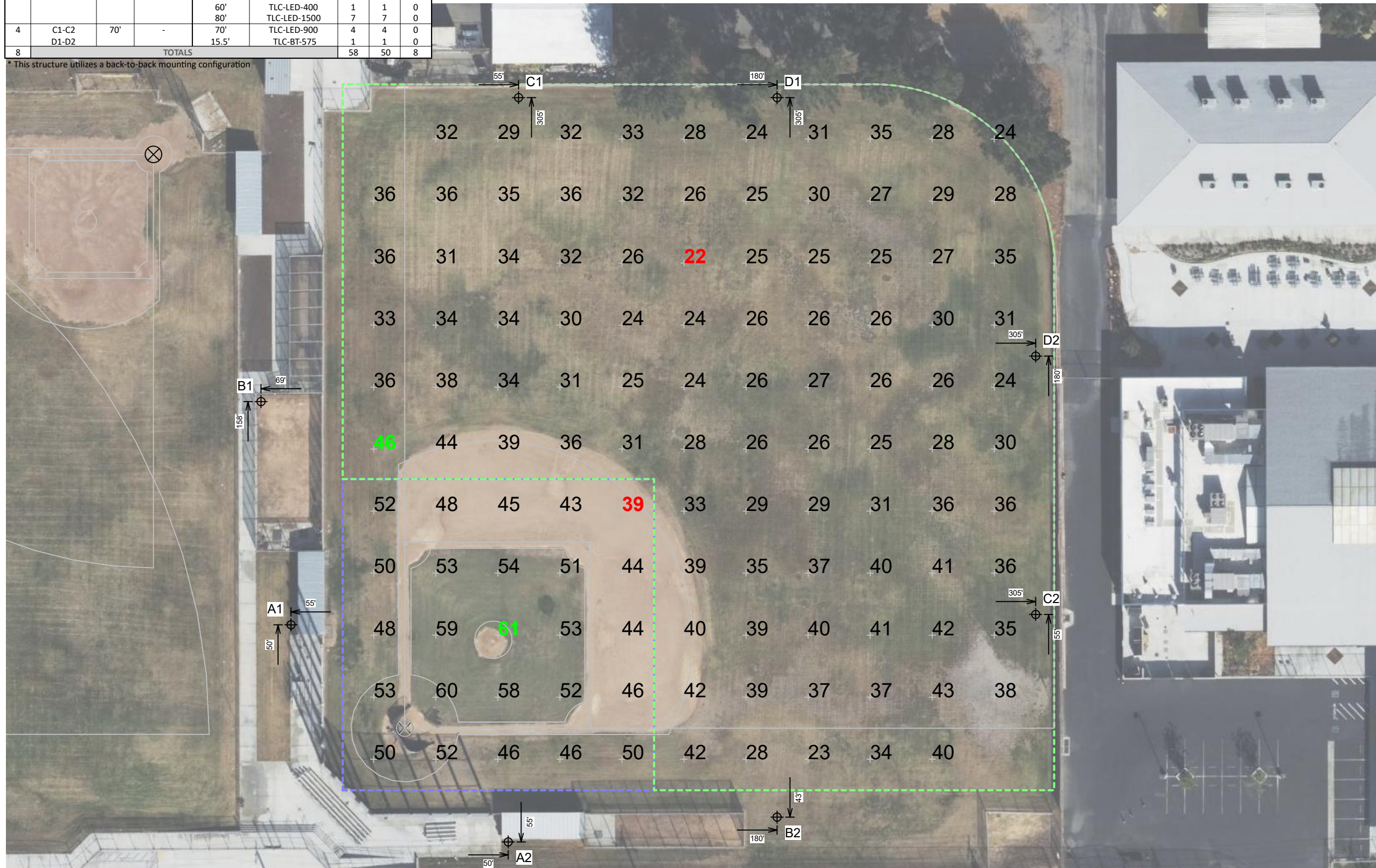


We Make It Happen.

Not to be reproduced in whole or part without the written consent of Musco Sports Lighting, LLC. ©1981, 2022 Musco Sports Lighting, LLC.

EQUIPMENT LIST FOR AREAS SHOWN								
Pole			Luminaires					
QTY	LOCATION	SIZE	GRADE ELEVATION	MOUNTING HEIGHT	LUMINAIRE TYPE	QTY / POLE	THIS GRID	OTHER GRIDS
2	A1-A2	70'	-	15.5'	TLC-BT-575	1	1	0
				70'	TLC-LED-1500	4	4	0
1	B1	80'	-	15.5'	TLC-BT-575	1/2*	1	2
				60'	TLC-LED-400	3	3	0
				80'	TLC-LED-1500	7/6*	7	6
1	B2	80'	-	15.5'	TLC-BT-575	1	1	0
				60'	TLC-LED-400	1	1	0
				80'	TLC-LED-1500	7	7	0
				80'	TLC-LED-1500	4	4	0
4	C1-C2 D1-D2	70'	-	70'	TLC-LED-900	4	4	0
				15.5'	TLC-BT-575	1	1	0
8	TOTALS					58	50	8

* This structure utilizes a back-to-back mounting configuration



GRID SUMMARY	
Name:	Varsity Baseball
Size:	Irregular 311' / 406' / 314'
Spacing:	30.0' x 30.0'
Height:	3.0' above grade

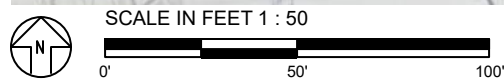
ILLUMINATION SUMMARY		
MAINTAINED HORIZONTAL FOOTCANDLES		
	Infield	Outfield
Guaranteed Average:	50	30
Scan Average:	50.29	32.03
Maximum:	61.1	46.2
Minimum:	39.2	21.8
Avg / Min:	1.28	1.47
Guaranteed Max / Min:	2	2.5
Max / Min:	1.56	2.12
UG (adjacent pts):	1.26	1.63
CU:	0.69	
No. of Points:	25	94
LUMINAIRE INFORMATION		
Applied Circuits:	A	
No. of Luminaires:	50	
Total Load:	51.9 kW	

Guaranteed Performance: The ILLUMINATION described above is guaranteed per your Musco Warranty document and includes a 0.95 dirt depreciation factor.

Field Measurements: Individual field measurements may vary from computer-calculated predictions and should be taken in accordance with IESNA RP-6-15.

Electrical System Requirements: Refer to Amperage Draw Chart and/or the "Musco Control System Summary" for electrical sizing.

Installation Requirements: Results assume ± 3% nominal voltage at line side of the driver and structures located within 3 feet (1m) of design locations.



ENGINEERED DESIGN By: · File #170206B · 08-Mar-22

Pole location(s) Ⓧ dimensions are relative to 0,0 reference point(s) ⊗



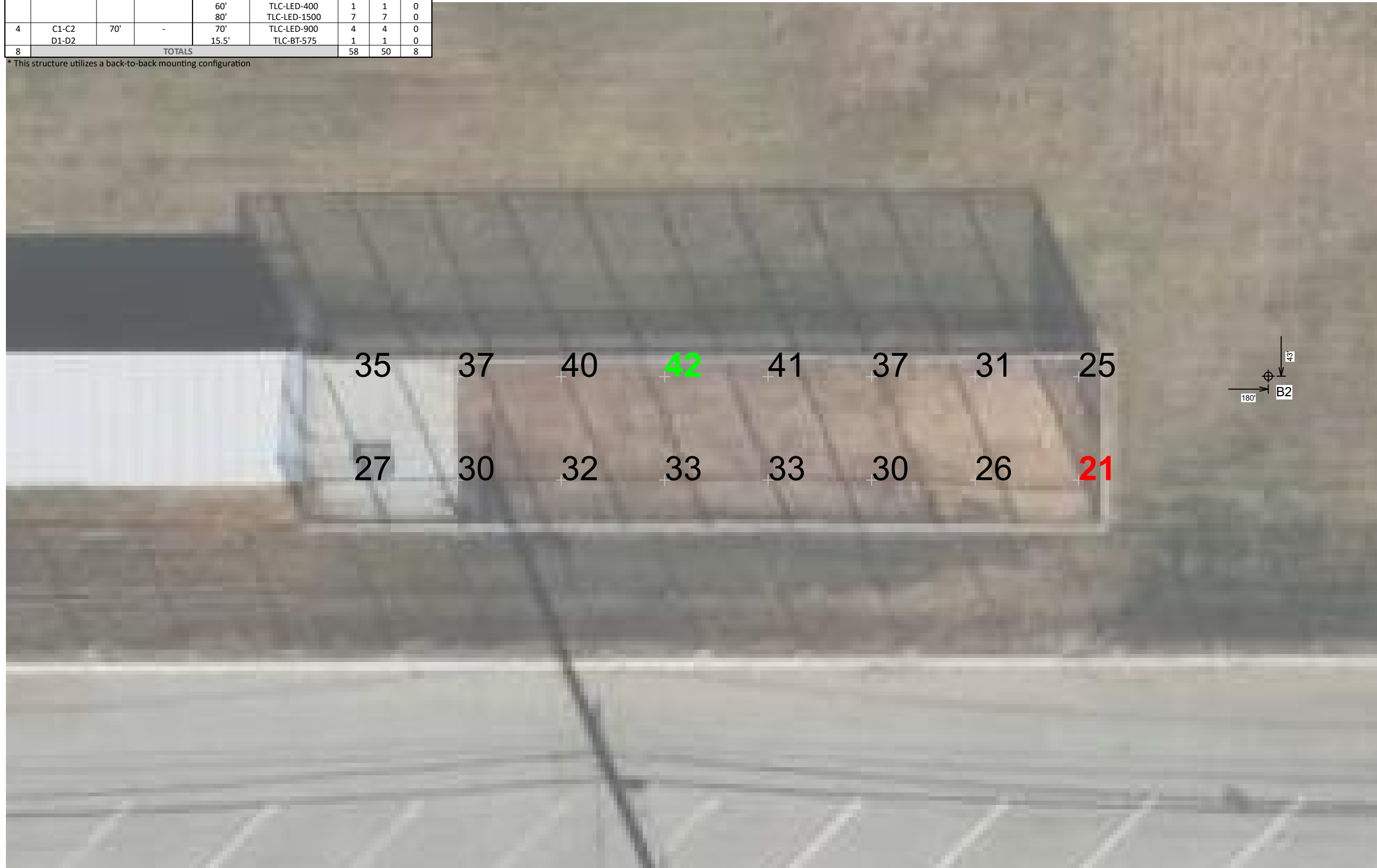
We Make It Happen.

Not to be reproduced in whole or part without the written consent of Musco Sports Lighting, LLC. ©1981, 2022 Musco Sports Lighting, LLC.

ILLUMINATION SUMMARY

EQUIPMENT LIST FOR AREAS SHOWN							
Pole				Luminaires			
QTY	LOCATION	SIZE	GRADE ELEVATION	MOUNTING HEIGHT	LUMINAIRE TYPE	QTY / POLE	THIS GRID / OTHER GRIDS
2	A1-A2	70'	-	15.5'	TLC-BT-575	1	1 0
				70'	TLC-LED-1500	4	4 0
1	B1	80'	-	15.5'	TLC-BT-575	1/2*	1 2
				60'	TLC-LED-400	3	3 0
				80'	TLC-LED-1500	7/6*	7 6
1	B2	80'	-	15.5'	TLC-BT-575	1	1 0
				60'	TLC-LED-400	1	1 0
				80'	TLC-LED-1500	7	7 0
4	C1-C2 D1-D2	70'	-	70'	TLC-LED-900	4	4 0
				15.5'	TLC-BT-575	1	1 0
8	TOTALS					58	50 8

* This structure utilizes a back-to-back mounting configuration



GRID SUMMARY	
Name:	VBB 1st Base Bullpen
Size:	Irregular 311' / 406' / 314'
Spacing:	10.0' x 10.0'
Height:	3.0' above grade

ILLUMINATION SUMMARY	
MAINTAINED HORIZONTAL FOOTCANDLES	
	Entire Grid
Scan Average:	32.38
Maximum:	41.8
Minimum:	20.9
Avg / Min:	1.55
Max / Min:	2.00
UG (adjacent pts):	1.31
CU:	0.01
No. of Points:	16
LUMINAIRE INFORMATION	
Applied Circuits:	A
No. of Luminaires:	50
Total Load:	51.9 kW

Guaranteed Performance: The ILLUMINATION described above is guaranteed per your Musco Warranty document and includes a 0.95 dirt depreciation factor.

Field Measurements: Individual field measurements may vary from computer-calculated predictions and should be taken in accordance with IESNA RP-6-15.

Electrical System Requirements: Refer to Amperage Draw Chart and/or the "Musco Control System Summary" for electrical sizing.

Installation Requirements: Results assume ± 3% nominal voltage at line side of the driver and structures located within 3 feet (1m) of design locations.



ENGINEERED DESIGN By: · File #170206B · 08-Mar-22

Pole location(s) ⊕ dimensions are relative to 0,0 reference point(s) ⊗



We Make It Happen®

Not to be reproduced in whole or part without the written consent of Musco Sports Lighting, LLC. ©1981, 2022 Musco Sports Lighting, LLC.

EQUIPMENT LIST FOR AREAS SHOWN									
Pole				Luminaires					
QTY	LOCATION	SIZE	GRADE ELEVATION	MOUNTING HEIGHT	LUMINAIRE TYPE	QTY / POLE	THIS GRID	OTHER GRIDS	
2	A1-A2	70'	-	15.5'	TLC-BT-575	1	1	0	
				70'	TLC-LED-1500	4	4	0	
1	B1	80'	-	15.5'	TLC-BT-575	1/2*	1	2	
				60'	TLC-LED-400	3	3	0	
				80'	TLC-LED-1500	7/6*	7	6	
1	B2	80'	-	15.5'	TLC-BT-575	1	1	0	
				60'	TLC-LED-400	1	1	0	
				80'	TLC-LED-1500	7	7	0	
				80'	TLC-LED-1500	7	7	0	
4	C1-C2 D1-D2	70'	-	70'	TLC-LED-900	4	4	0	
				15.5'	TLC-BT-575	1	1	0	
8	TOTALS						58	50	8

* This structure utilizes a back-to-back mounting configuration



GRID SUMMARY	
Name:	VBB 3rd Base Bullpen
Size:	Irregular 311' / 406' / 314'
Spacing:	10.0' x 10.0'
Height:	3.0' above grade

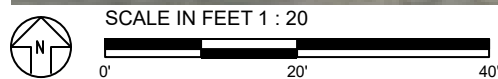
ILLUMINATION SUMMARY	
MAINTAINED HORIZONTAL FOOTCANDLES	
	Entire Grid
Scan Average:	37.21
Maximum:	49.8
Minimum:	22.9
Avg / Min:	1.62
Max / Min:	2.17
UG (adjacent pts):	1.43
CU:	0.02
No. of Points:	24
LUMINAIRE INFORMATION	
Applied Circuits:	A
No. of Luminaires:	50
Total Load:	51.9 kW

Guaranteed Performance: The ILLUMINATION described above is guaranteed per your Musco Warranty document and includes a 0.95 dirt depreciation factor.

Field Measurements: Individual field measurements may vary from computer-calculated predictions and should be taken in accordance with IESNA RP-6-15.

Electrical System Requirements: Refer to Amperage Draw Chart and/or the "Musco Control System Summary" for electrical sizing.

Installation Requirements: Results assume ± 3% nominal voltage at line side of the driver and structures located within 3 feet (1m) of design locations.



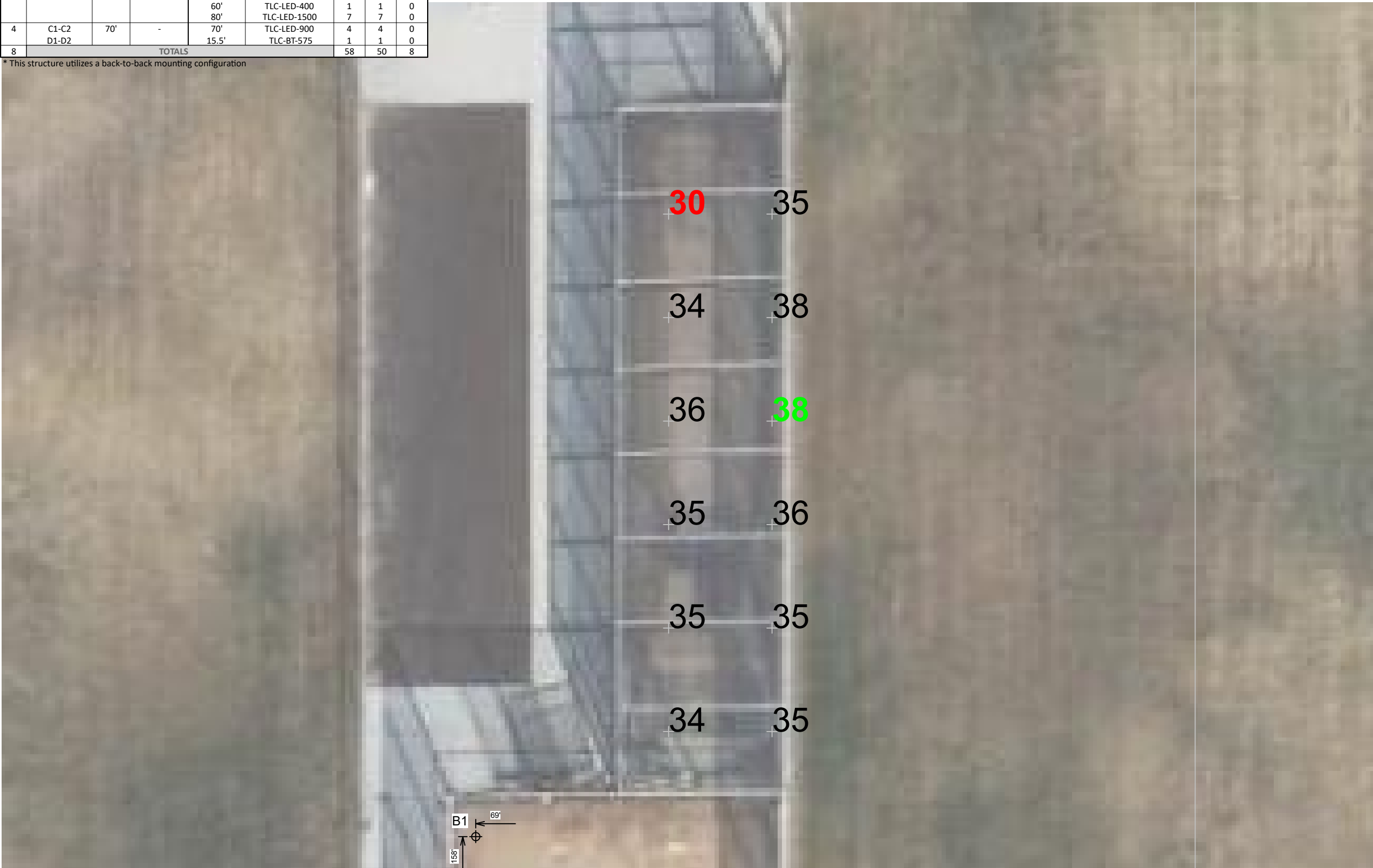
Pole location(s) ⊕ dimensions are relative to 0,0 reference point(s) ⊗



We Make It Happen.

EQUIPMENT LIST FOR AREAS SHOWN							
Pole				Luminaires			
QTY	LOCATION	SIZE	GRADE ELEVATION	MOUNTING HEIGHT	LUMINAIRE TYPE	QTY / POLE	THIS GRID / OTHER GRIDS
2	A1-A2	70'	-	15.5'	TLC-BT-575	1	1 0
				70'	TLC-LED-1500	4	4 0
1	B1	80'	-	15.5'	TLC-BT-575	1/2*	1 2
				60'	TLC-LED-400	3	3 0
				80'	TLC-LED-1500	7/6*	7 6
1	B2	80'	-	15.5'	TLC-BT-575	1	1 0
				60'	TLC-LED-400	1	1 0
				80'	TLC-LED-1500	7	7 0
4	C1-C2 D1-D2	70'	-	70'	TLC-LED-900	4	4 0
				15.5'	TLC-BT-575	1	1 0
8	TOTALS					58	50 8

* This structure utilizes a back-to-back mounting configuration



Bloomington High School Baseball & Softball
Bloomington, CA

GRID SUMMARY	
Name:	VBB Batting Cage
Size:	Irregular 311' / 406' / 314'
Spacing:	10.0' x 10.0'
Height:	3.0' above grade

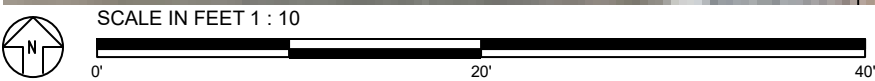
ILLUMINATION SUMMARY	
MAINTAINED HORIZONTAL FOOTCANDLES	
	Entire Grid
Scan Average:	35.04
Maximum:	37.9
Minimum:	30.1
Avg / Min:	1.16
Max / Min:	1.26
UG (adjacent pts):	1.16
CU:	0.01
No. of Points:	12
LUMINAIRE INFORMATION	
Applied Circuits:	A
No. of Luminaires:	50
Total Load:	51.9 kW

Guaranteed Performance: The ILLUMINATION described above is guaranteed per your Musco Warranty document and includes a 0.95 dirt depreciation factor.

Field Measurements: Individual field measurements may vary from computer-calculated predictions and should be taken in accordance with IESNA RP-6-15.

Electrical System Requirements: Refer to Amperage Draw Chart and/or the "Musco Control System Summary" for electrical sizing.

Installation Requirements: Results assume ± 3% nominal voltage at line side of the driver and structures located within 3 feet (1m) of design locations.



Pole location(s) ⊕ dimensions are relative to 0,0 reference point(s) ⊗



We Make It Happen.

Not to be reproduced in whole or part without the written consent of Musco Sports Lighting, LLC. ©1981, 2022 Musco Sports Lighting, LLC.

EQUIPMENT LIST FOR AREAS SHOWN									
Pole				Luminaires					
QTY	LOCATION	SIZE	GRADE ELEVATION	MOUNTING HEIGHT	LUMINAIRE TYPE	QTY / POLE	THIS GRID	OTHER GRIDS	
2	A3-A4	60'	-	60'	TLC-LED-900	1	1	0	
				15.5'	TLC-BT-575	1	1	0	
				60'	TLC-LED-1200	2	2	0	
1	B3	70'	-	15.5'	TLC-BT-575	2	2	0	
				70'	TLC-LED-1200	5	5	0	
				15.5'	TLC-BT-575	2	2	0	
1	B4	70'	-	15.5'	TLC-BT-575	2	2	0	
				40'	TLC-LED-600	1	1	0	
				70'	TLC-LED-1200	5	5	0	
4	TOTALS					23	23	0	

GRID SUMMARY	
Name:	Varsity Softball
Size:	200'/205'/200' - basepath 60'
Spacing:	20.0' x 20.0'
Height:	3.0' above grade

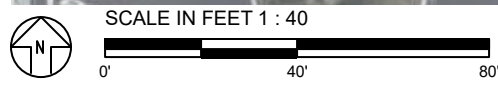
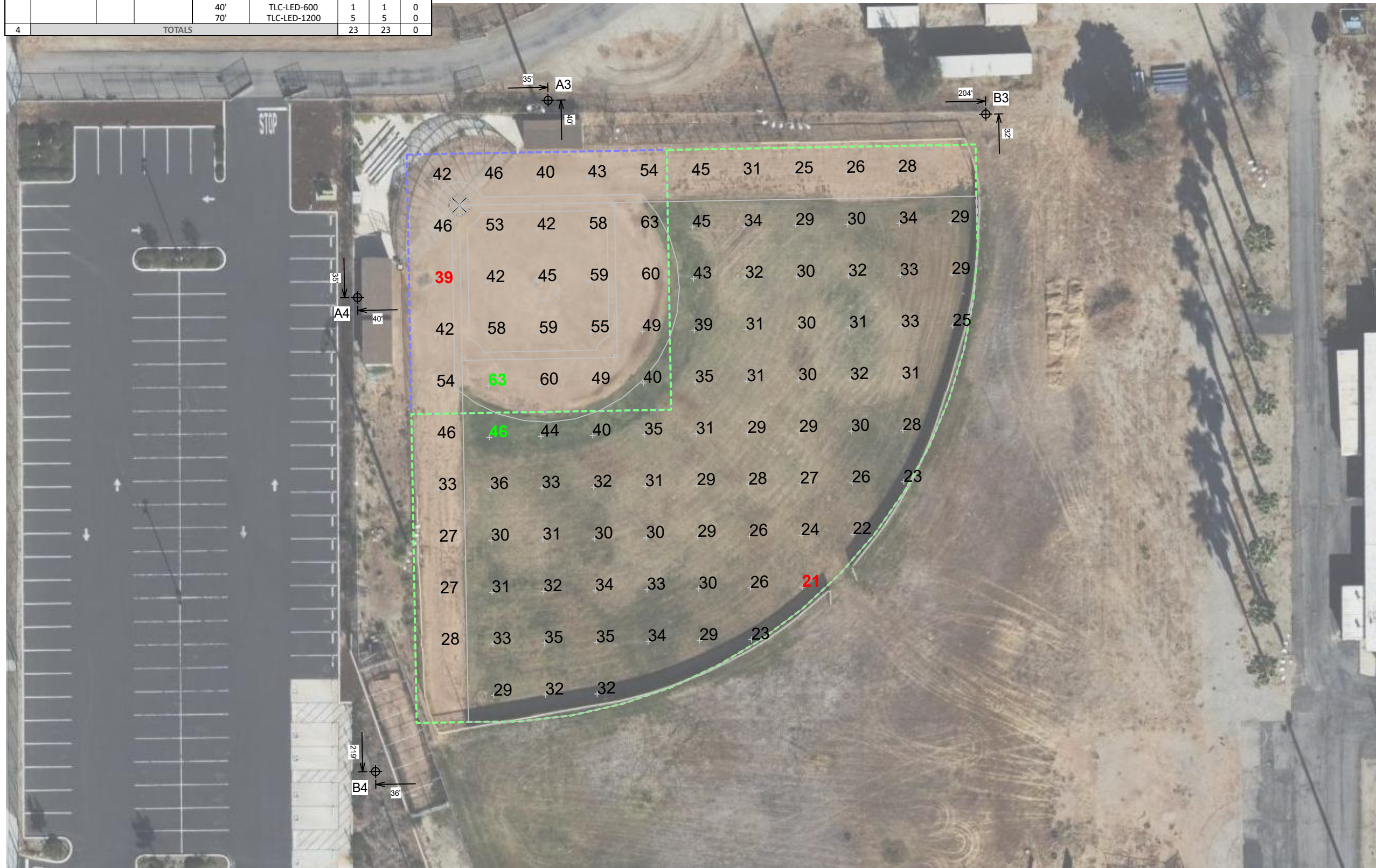
ILLUMINATION SUMMARY		
MAINTAINED HORIZONTAL FOOTCANDLES		
	Infield	Outfield
Guaranteed Average:	50	30
Scan Average:	50.46	31.39
Maximum:	63.2	45.7
Minimum:	39.0	21.5
Avg / Min:	1.29	1.46
Guaranteed Max / Min:	2	2.5
Max / Min:	1.62	2.13
UG (adjacent pts):	1.38	1.44
CU:	0.60	
No. of Points:	25	75
LUMINAIRE INFORMATION		
Applied Circuits:	B	
No. of Luminaires:	23	
Total Load:	22.19 kW	

Guaranteed Performance: The ILLUMINATION described above is guaranteed per your Musco Warranty document and includes a 0.95 dirt depreciation factor.

Field Measurements: Individual field measurements may vary from computer-calculated predictions and should be taken in accordance with IESNA RP-6-15.

Electrical System Requirements: Refer to Amperage Draw Chart and/or the "Musco Control System Summary" for electrical sizing.

Installation Requirements: Results assume ± 3% nominal voltage at line side of the driver and structures located within 3 feet (1m) of design locations.



Pole location(s) ⊕ dimensions are relative to 0,0 reference point(s) ⊗



We Make It Happen.

Not to be reproduced in whole or part without the written consent of Musco Sports Lighting, LLC. ©1981, 2022 Musco Sports Lighting, LLC.

EQUIPMENT LIST FOR AREAS SHOWN								
Pole				Luminaires				
QTY	LOCATION	SIZE	GRADE ELEVATION	MOUNTING HEIGHT	LUMINAIRE TYPE	QTY / POLE	THIS GRID	OTHER GRIDS
2	A3-A4	60'	-	60'	TLC-LED-900	1	1	0
				15.5'	TLC-BT-575	1	1	0
				60'	TLC-LED-1200	2	2	0
1	B3	70'	-	15.5'	TLC-BT-575	2	2	0
				70'	TLC-LED-1200	5	5	0
				15.5'	TLC-BT-575	2	2	0
1	B4	70'	-	15.5'	TLC-BT-575	2	2	0
				40'	TLC-LED-600	1	1	0
				70'	TLC-LED-1200	5	5	0
4	TOTALS					23	23	0

GRID SUMMARY	
Name:	VSF Batting Cage
Size:	200'/205'/200' - basepath 60'
Spacing:	10.0' x 10.0'
Height:	3.0' above grade

ILLUMINATION SUMMARY	
MAINTAINED HORIZONTAL FOOTCANDLES	
	Entire Grid
Scan Average:	32.66
Maximum:	40.5
Minimum:	21.7
Avg / Min:	1.51
Max / Min:	1.87
UG (adjacent pts):	1.63
CU:	0.02
No. of Points:	12
LUMINAIRE INFORMATION	
Applied Circuits:	B
No. of Luminaires:	23
Total Load:	22.19 kW

Guaranteed Performance: The ILLUMINATION described above is guaranteed per your Musco Warranty document and includes a 0.95 dirt depreciation factor.

Field Measurements: Individual field measurements may vary from computer-calculated predictions and should be taken in accordance with IESNA RP-6-15.

Electrical System Requirements: Refer to Amperage Draw Chart and/or the "Musco Control System Summary" for electrical sizing.

Installation Requirements: Results assume ± 3% nominal voltage at line side of the driver and structures located within 3 feet (1m) of design locations.



Pole location(s) ⊕ dimensions are relative to 0,0 reference point(s) ⊗



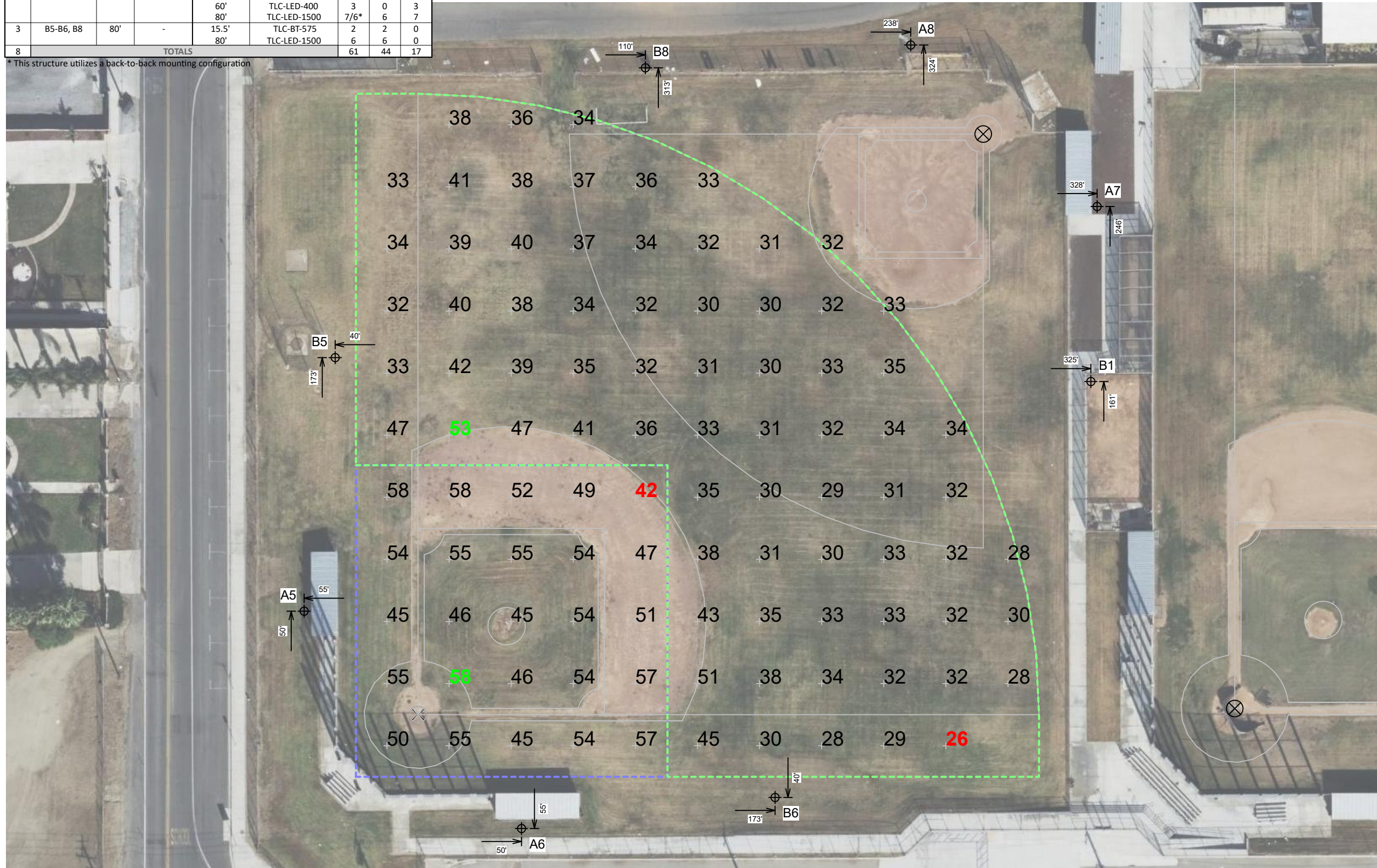
We Make It Happen.

Not to be reproduced in whole or part without the written consent of Musco Sports Lighting, LLC. ©1981, 2022 Musco Sports Lighting, LLC.

EQUIPMENT LIST FOR AREAS SHOWN

Pole		Luminaires						
QTY	LOCATION	SIZE	GRADE ELEVATION	MOUNTING HEIGHT	LUMINAIRE TYPE	QTY / POLE	THIS GRID	OTHER GRIDS
2	A5-A6	70'	-	15.5'	TLC-BT-575	1	1	0
				70'	TLC-LED-1500	4	4	0
2	A7-A8	70'	-	70'	TLC-LED-1200	1	0	1
				15.5'	TLC-BT-575	1	1	0
				70'	TLC-LED-900	2	0	2
1	B1	80'	-	15.5'	TLC-BT-575	1/2*	2	1
				60'	TLC-LED-400	3	0	3
				80'	TLC-LED-1500	7/6*	6	7
				15.5'	TLC-BT-575	2	2	0
3	B5-B6, B8	80'	-	15.5'	TLC-BT-575	2	2	0
				80'	TLC-LED-1500	6	6	0
8	TOTALS					61	44	17

* This structure utilizes a back-to-back mounting configuration



**Bloomington High School Baseball & Softball
Bloomington, CA**

GRID SUMMARY	
Name:	JV Baseball
Size:	300'/300'/300' - basepath 90'
Spacing:	30.0' x 30.0'
Height:	3.0' above grade

ILLUMINATION SUMMARY		
MAINTAINED HORIZONTAL FOOTCANDLES		
	Infield	Outfield
Guaranteed Average:	50	30
Scan Average:	51.87	34.66
Maximum:	58.0	53.0
Minimum:	42.0	26.4
Avg / Min:	1.24	1.31
Guaranteed Max / Min:	2	2.5
Max / Min:	1.38	2.01
UG (adjacent pts):	1.25	1.53
CU:	0.62	
No. of Points:	25	73
LUMINAIRE INFORMATION		
Applied Circuits:	C, D	
No. of Luminaires:	44	
Total Load:	52.66 kW	

Guaranteed Performance: The ILLUMINATION described above is guaranteed per your Musco Warranty document and includes a 0.95 dirt depreciation factor.

Field Measurements: Individual field measurements may vary from computer-calculated predictions and should be taken in accordance with IESNA RP-6-15.

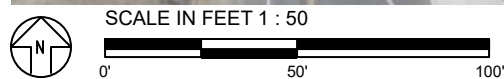
Electrical System Requirements: Refer to Amperage Draw Chart and/or the "Musco Control System Summary" for electrical sizing.

Installation Requirements: Results assume ± 3% nominal voltage at line side of the driver and structures located within 3 feet (1m) of design locations.



We Make It Happen.

Not to be reproduced in whole or part without the written consent of Musco Sports Lighting, LLC. ©1981, 2022 Musco Sports Lighting, LLC.



Pole location(s) Ⓢ dimensions are relative to 0,0 reference point(s) ⊗

EQUIPMENT LIST FOR AREAS SHOWN

Pole		Luminaires						
QTY	LOCATION	SIZE	GRADE ELEVATION	MOUNTING HEIGHT	LUMINAIRE TYPE	QTY / POLE	THIS GRID	OTHER GRIDS
2	A7-A8	70'	-	70'	TLC-LED-1200	1	1	0
				15.5'	TLC-BT-575	1	0	1
				70'	TLC-LED-900	2	2	0
1	B1	80'	-	15.5'	TLC-BT-575	1/2*	2	1
				60'	TLC-LED-400	3	0	3
				80'	TLC-LED-1500	7/6*	6	7
				15.5'	TLC-BT-575	2	2	0
3	B5-B6, B8	80'	-	15.5'	TLC-BT-575	2	2	0
				80'	TLC-LED-1500	6	6	0
6	TOTALS					51	38	13

* This structure utilizes a back-to-back mounting configuration

**Bloomington High School Baseball & Softball
Bloomington, CA**

GRID SUMMARY	
Name:	JV Softball
Size:	200'/200'/200' - basepath 60'
Spacing:	20.0' x 20.0'
Height:	3.0' above grade

ILLUMINATION SUMMARY		
MAINTAINED HORIZONTAL FOOTCANDLES		
	Infield	Outfield
Guaranteed Average:	50	30
Scan Average:	54.71	34.76
Maximum:	65.4	49.2
Minimum:	44.6	25.3
Avg / Min:	1.23	1.38
Guaranteed Max / Min:	2	2.5
Max / Min:	1.47	1.95
UG (adjacent pts):	1.19	1.36
CU:	0.33	
No. of Points:	25	73
LUMINAIRE INFORMATION		
Applied Circuits:	D, E	
No. of Luminaires:	38	
Total Load:	44.82 kW	

Guaranteed Performance: The ILLUMINATION described above is guaranteed per your Musco Warranty document and includes a 0.95 dirt depreciation factor.

Field Measurements: Individual field measurements may vary from computer-calculated predictions and should be taken in accordance with IESNA RP-6-15.

Electrical System Requirements: Refer to Amperage Draw Chart and/or the "Musco Control System Summary" for electrical sizing.

Installation Requirements: Results assume ± 3% nominal voltage at line side of the driver and structures located within 3 feet (1m) of design locations.



Pole location(s) Ⓢ dimensions are relative to 0,0 reference point(s) ⊗



We Make It Happen.

Not to be reproduced in whole or part without the written consent of Musco Sports Lighting, LLC. ©1981, 2022 Musco Sports Lighting, LLC.



GRID SUMMARY	
Name:	Santa Ana Ave Spill
Spacing:	30.0'
Height:	3.0' above grade

ILLUMINATION SUMMARY	
HORIZONTAL FOOTCANDLES	
Scan Average:	Entire Grid 0.0983
Maximum:	0.269
Minimum:	0.000
No. of Points:	40
LUMINAIRE INFORMATION	
Applied Circuits:	A, B, C, D, E
No. of Luminaires:	123
Total Load:	132.65 kW

Guaranteed Performance: The ILLUMINATION described above is guaranteed per your Musco Warranty document.

Field Measurements: Individual field measurements may vary from computer-calculated predictions and should be taken in accordance with IESNA RP-6-15.

Electrical System Requirements: Refer to Amperage Draw Chart and/or the "Musco Control System Summary" for electrical sizing.

Installation Requirements: Results assume ± 3% nominal voltage at line side of the driver and structures located within 3 feet (1m) of design locations.



SCALE IN FEET 1 : 200



Pole location(s) ⊕ dimensions are relative to 0,0 reference point(s) ⊗



We Make It Happen.



GRID SUMMARY	
Name:	Santa Ana Ave Spill
Spacing:	30.0'
Height:	3.0' above grade

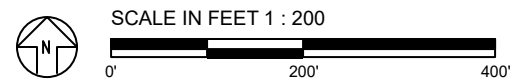
ILLUMINATION SUMMARY	
MAX VERTICAL FOOTCANDLES	
Scan Average:	Entire Grid 0.2950
Maximum:	0.829
Minimum:	0.000
No. of Points:	40
LUMINAIRE INFORMATION	
Applied Circuits:	A, B, C, D, E
No. of Luminaires:	123
Total Load:	132.65 kW

Guaranteed Performance: The ILLUMINATION described above is guaranteed per your Musco Warranty document.

Field Measurements: Individual field measurements may vary from computer-calculated predictions and should be taken in accordance with IESNA RP-6-15.

Electrical System Requirements: Refer to Amperage Draw Chart and/or the "Musco Control System Summary" for electrical sizing.

Installation Requirements: Results assume $\pm 3\%$ nominal voltage at line side of the driver and structures located within 3 feet (1m) of design locations.



ENGINEERED DESIGN By: · File #170206B · 08-Mar-22

Pole location(s) \oplus dimensions are relative to 0,0 reference point(s) \otimes



We Make It Happen.

Not to be reproduced in whole or part without the written consent of Musco Sports Lighting, LLC. ©1981, 2022 Musco Sports Lighting, LLC.



GRID SUMMARY	
Name:	Santa Ana Ave Spill
Spacing:	30.0'
Height:	3.0' above grade

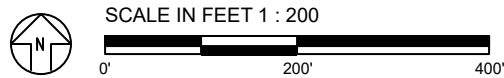
ILLUMINATION SUMMARY	
CANDELA (PER FIXTURE)	
Entire Grid	
Scan Average:	15490.8984
Maximum:	44175.676
Minimum:	74.529
No. of Points:	40
LUMINAIRE INFORMATION	
Applied Circuits:	A, B, C, D, E
No. of Luminaires:	123
Total Load:	132.65 kW

Guaranteed Performance: The ILLUMINATION described above is guaranteed per your Musco Warranty document.

Field Measurements: Individual field measurements may vary from computer-calculated predictions and should be taken in accordance with IESNA RP-6-15.

Electrical System Requirements: Refer to Amperage Draw Chart and/or the "Musco Control System Summary" for electrical sizing.

Installation Requirements: Results assume ± 3% nominal voltage at line side of the driver and structures located within 3 feet (1m) of design locations.



Pole location(s) ⊕ dimensions are relative to 0,0 reference point(s) ⊗



We Make It Happen.



GRID SUMMARY	
Name:	Alder Ave Spill
Spacing:	30.0'
Height:	3.0' above grade

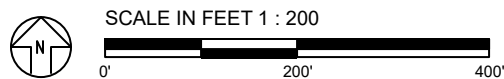
ILLUMINATION SUMMARY	
HORIZONTAL FOOTCANDLES	
Scan Average:	Entire Grid 0.0552
Maximum:	0.345
Minimum:	0.000
No. of Points:	54
LUMINAIRE INFORMATION	
Applied Circuits:	A, B, C, D, E
No. of Luminaires:	123
Total Load:	132.65 kW

Guaranteed Performance: The ILLUMINATION described above is guaranteed per your Musco Warranty document.

Field Measurements: Individual field measurements may vary from computer-calculated predictions and should be taken in accordance with IESNA RP-6-15.

Electrical System Requirements: Refer to Amperage Draw Chart and/or the "Musco Control System Summary" for electrical sizing.

Installation Requirements: Results assume ± 3% nominal voltage at line side of the driver and structures located within 3 feet (1m) of design locations.



Pole location(s) ⊕ dimensions are relative to 0,0 reference point(s) ⊗



We Make It Happen.



GRID SUMMARY	
Name:	Alder Ave Spill
Spacing:	30.0'
Height:	3.0' above grade

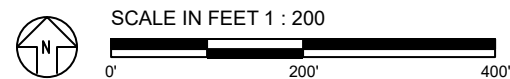
ILLUMINATION SUMMARY	
MAX VERTICAL FOOTCANDLES	
Scan Average:	Entire Grid 0.1546
Maximum:	1.022
Minimum:	0.000
No. of Points:	54
LUMINAIRE INFORMATION	
Applied Circuits:	A, B, C, D, E
No. of Luminaires:	123
Total Load:	132.65 kW

Guaranteed Performance: The ILLUMINATION described above is guaranteed per your Musco Warranty document.

Field Measurements: Individual field measurements may vary from computer-calculated predictions and should be taken in accordance with IESNA RP-6-15.

Electrical System Requirements: Refer to Amperage Draw Chart and/or the "Musco Control System Summary" for electrical sizing.

Installation Requirements: Results assume ± 3% nominal voltage at line side of the driver and structures located within 3 feet (1m) of design locations.



Pole location(s) ⊕ dimensions are relative to 0,0 reference point(s) ⊗



We Make It Happen.



GRID SUMMARY	
Name:	Alder Ave Spill
Spacing:	30.0'
Height:	3.0' above grade

ILLUMINATION SUMMARY	
CANDELA (PER FIXTURE)	
Scan Average:	Entire Grid 6255.1899
Maximum:	41192.996
Minimum:	30.751
No. of Points:	54
LUMINAIRE INFORMATION	
Applied Circuits:	A, B, C, D, E
No. of Luminaires:	123
Total Load:	132.65 kW

Guaranteed Performance: The ILLUMINATION described above is guaranteed per your Musco Warranty document.

Field Measurements: Individual field measurements may vary from computer-calculated predictions and should be taken in accordance with IESNA RP-6-15.

Electrical System Requirements: Refer to Amperage Draw Chart and/or the "Musco Control System Summary" for electrical sizing.

Installation Requirements: Results assume ± 3% nominal voltage at line side of the driver and structures located within 3 feet (1m) of design locations.



SCALE IN FEET 1 : 200



Pole location(s) ⊕ dimensions are relative to 0,0 reference point(s) ⊗



We Make It Happen.



EQUIPMENT LAYOUT

INCLUDES:

- Baseball
- JV Baseball
- JV Softball
- Softball

Electrical System Requirements: Refer to Amperage Draw Chart and/or the "Musco Control System Summary" for electrical sizing.

Installation Requirements: Results assume ± 3% nominal voltage at line side of the driver and structures located within 3 feet (1m) of design locations.

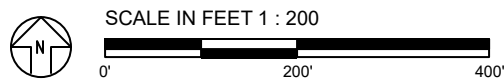
EQUIPMENT LIST FOR AREAS SHOWN

QTY	LOCATION	Pole		Luminaires		
		SIZE	GRADE ELEVATION	MOUNTING HEIGHT	LUMINAIRE TYPE	QTY / POLE
4	A1-A2	70'	-	70'	TLC-LED-1500	4
	A5-A6			15.5'	TLC-BT-575	1
2	A3-A4	60'	-	60'	TLC-LED-900	1
				15.5'	TLC-BT-575	1
				60'	TLC-LED-1200	2
2	A7-A8	70'	-	70'	TLC-LED-1200	1
				15.5'	TLC-BT-575	1
				70'	TLC-LED-900	2
1	B1	80'	-	15.5'	TLC-BT-575	1/2*
				60'	TLC-LED-400	3
				80'	TLC-LED-1500	7/6*
1	B2	80'	-	15.5'	TLC-BT-575	1
				60'	TLC-LED-400	1
				80'	TLC-LED-1500	7
1	B3	70'	-	15.5'	TLC-BT-575	2
				70'	TLC-LED-1200	5
1	B4	70'	-	15.5'	TLC-BT-575	2
				40'	TLC-LED-600	1
				70'	TLC-LED-1200	5
3	B5-B6, B8	80'	-	15.5'	TLC-BT-575	2
				80'	TLC-LED-1500	6
				15.5'	TLC-LED-900	4
4	C1-C2	70'	-	70'	TLC-LED-900	4
				D1-D2	15.5'	TLC-BT-575
19	TOTALS					123

* This structure utilizes a back-to-back mounting configuration

SINGLE LUMINAIRE AMPERAGE DRAW CHART

Ballast Specifications (.90 min power factor)	Line Amperage Per Luminaire (max draw)						
	208 (60)	220 (60)	240 (60)	277 (60)	347 (60)	380 (60)	480 (60)
Single Phase Voltage	208 (60)	220 (60)	240 (60)	277 (60)	347 (60)	380 (60)	480 (60)
TLC-LED-400	2.3	2.2	2.0	1.7	1.4	1.3	1.0
TLC-LED-1500	8.5	8.1	7.4	6.4	5.1	4.7	3.7
TLC-LED-1200	7.0	6.6	6.1	5.2	4.2	4.0	3.0
TLC-LED-600	3.4	3.2	3.0	2.6	2.0	1.9	1.5
TLC-LED-900	5.3	5.0	4.6	4.0	3.2	2.9	2.3
TLC-BT-575	3.4	3.2	2.9	2.5	2.0	1.8	1.5



Pole location(s) ⊕ dimensions are relative to 0,0 reference point(s) ⊗



We Make It Happen.

Not to be reproduced in whole or part without the written consent of Musco Sports Lighting, LLC. ©1981, 2022 Musco Sports Lighting, LLC.